

RUOTE E GUIDE



Ruota gola semitonda

310W

1 CUSCINETTO
1 BEARING

COD. PROD.		D	C				
11504505 001	310-50	Ø50	16	zinc	70 Kg	30	4,7
11504515 001	310-70	Ø68	34	zinc	190 Kg	12	5,8



Guida inferiore per cancello a cementare D.19 SP.3 ML.6 zincata

287 GZ



Guida inferiore per cancello a fissare D.15 SP.3 ML.3 zincata

289 P-15

10201501 001



Guida inferiore per cancello ad avvitare L.55 mm ML.3 zincata

3097/V3

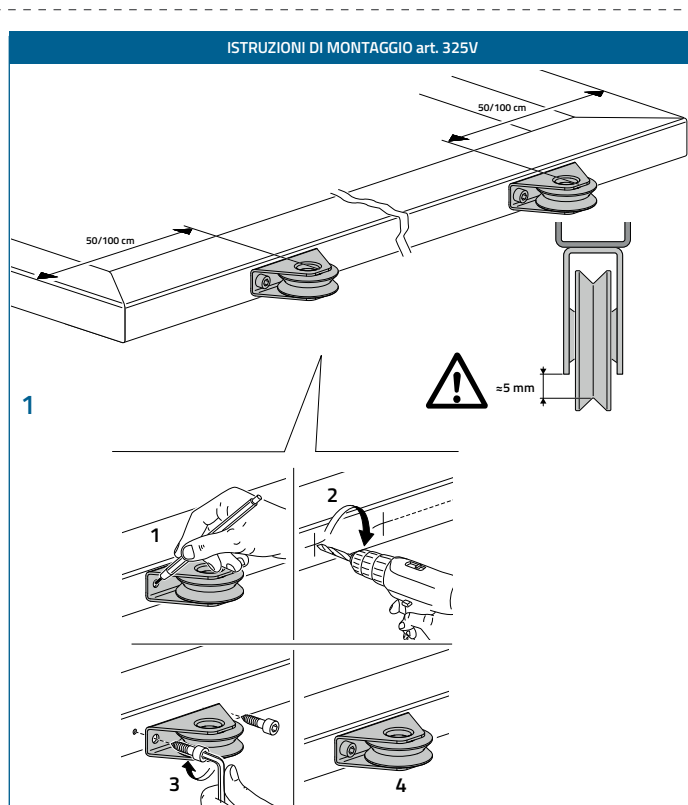


Ruota con piastre gola V

333W

2 CUSCINETTI
2 BEARINGS

COD. PROD.		D	C				
11512040 001	333V-100	Ø98	41	zinc	380 Kg	6	9,9
11512060 001	333V-140	Ø137	41	zinc	420 Kg	2	6,9



Ruota con supporto esterno gola V

325W

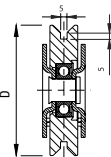
1 CUSCINETTO
1 BEARING

COD. PROD.		D	C				
11509010 001	325V-60	Ø60	25	zinc	100 Kg	12	4,7

RUOTE



Ruota con supporto interno gola Y



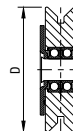
335 W

1 CUSCINETTO
1 BEARING

COD. PROD.		D	C				
11513720 001	335Y-80	Ø78	32	zinc	180 Kg	6	4,7
11513730 001	335Y-90	Ø88	32	zinc	190 Kg	6	6,5
11513740 001	335Y-100	Ø98	32	zinc	200 Kg	6	7,8
11513750 001	335Y-120	Ø117	37	zinc	220 Kg	2	4,3
11513760 001	335Y-140	Ø137	40	zinc	240 Kg	2	6,0



Ruota con supporto interno gola Y



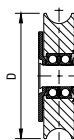
336 W

2 CUSCINETTI
2 BEARINGS

COD. PROD.		D	C				
11514730 001	336Y-90	Ø88	32	zinc	300 Kg	6	7,2
11514740 001	336Y-100	Ø98	32	zinc	380 Kg	6	8,7
11514750 001	336Y-120	Ø117	37	zinc	400 Kg	2	4,9
11514760 001	336Y-140	Ø137	40	zinc	420 Kg	2	6,9



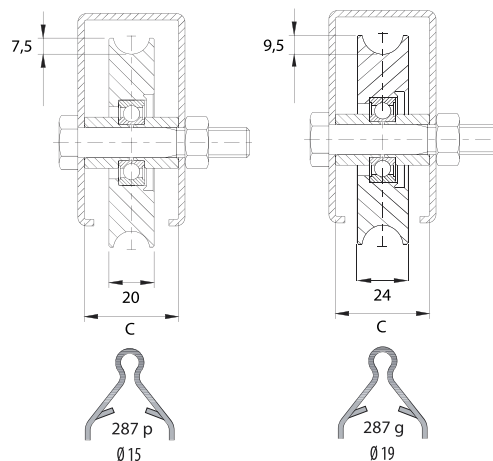
Ruota supporto interno gola semitonda a 2 cuscinetti



338 I I

2 CUSCINETTI
2 BEARINGS

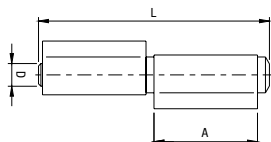
COD. PROD.		D	C				
11515530 001	338-90	Ø19	Ø88	32	zinc	300 Kg	6
11515540 001	338-100	Ø19	Ø98	32	zinc	380 Kg	6
11515550 001	338-120	Ø19	Ø117	37	zinc	400 Kg	2
11515560 001	338-140	Ø19	Ø137	40	zinc	420 Kg	2



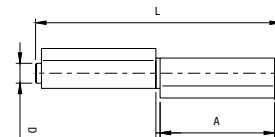
CERNIERE



Cerniera a 2 ali con perno sfilabile



Cerniera pesante a 2 ali con perno sfilabile



402Z

COD. PROD.		L	A	D			
11604006 001	402Z-60	58	26	Ø5,7	zinc	50 Kg*	40
11604008 001	402Z-80	83	38	Ø7,7	zinc	75 Kg*	50
11604010 001	402Z-100	104	48	Ø8,7	zinc	100 Kg*	50
11604012 001	402Z-120	122	57	Ø9,8	zinc	150 Kg*	40
11604014 001	402Z-140	144	68	Ø10,7	zinc	200 Kg*	40

* valore portata a coppia L/H=1 / capacity of couple hinges L/H=1

405Z

COD. PROD.		L	A	D			
11604514 001	405Z-140	145	68	Ø11,7	zinc	250 Kg*	20
11604517 001	405Z-170	174	83	Ø11,7	zinc	250 Kg*	20
11604520 001	405Z-200	205	98	Ø13,6	zinc	350 Kg*	14

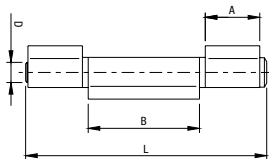
* valore portata a coppia L/H=1 / capacity of couple hinges L/H=1

CERNIERE



410Z

Cerniera a 3 ali con perno sfilabile



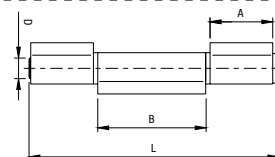
COD. PROD.	L	A	B	D	Material	Weight	Capacity	Lead
11605008 001	410Z-80	83	18	38	Ø77 zinc	75 Kg*	50	3,9
11605010 001	410Z-100	104	23,5	48	Ø8,7 zinc	100 Kg*	50	5,8
11605012 001	410Z-120	122	27	57	Ø9,8 zinc	150 Kg*	40	7,3
11605014 001	410Z-140	144	33	68	Ø10,7 zinc	200 Kg*	40	9,6

* valore portata a coppia L/H=1 / capacity of couple hinges L/H=1



415Z

Cerniera pesante a 3 ali con perno sfilabile



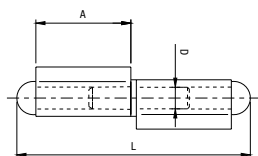
COD. PROD.	L	A	B	D	Material	Weight	Capacity	Lead
11605514 001	415Z-140	145	36	62	Ø11,7 zinc	250 Kg*	20	9,9
11605517 001	415Z-170	174	44	75	Ø11,7 zinc	250 Kg*	20	7,0
11605520 001	415Z-200	205	52	89	Ø13,6 zinc	350 Kg*	16	8,2

* valore portata a coppia L/H=1 / capacity of couple hinges L/H=1



420

Cerniera a 2 ali con tappo saldato



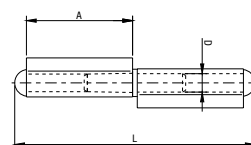
COD. PROD.	L	A	D	Weight	Capacity	Lead	
11606006	420-60	64	26	Ø5,8	50 Kg*	40	1,3
11606008	420-80	89,5	38	Ø7,8	75 Kg*	50	3,2
11606010	420-100	110	48	Ø8,7	100 Kg*	50	4,4
11606012	420-120	130	57	Ø9,8	150 Kg*	50	7,0
11606014	420-140	152	68	Ø10,8	200 Kg*	50	9,0

* valore portata a coppia L/H=1 / capacity of couple hinges L/H=1



425

Cerniera pesante a 2 ali con tappo saldato



COD. PROD.	L	A	D	Weight	Capacity	Lead	
11606514	425-140	154	68	Ø11,8	250 Kg*	20	4,5
11606517	425-170	184,5	83	Ø11,8	250 Kg*	20	5,2
11606520	425-200	217,5	98	Ø13,8	350 Kg*	20	7,8

* valore portata a coppia L/H=1 / capacity of couple hinges L/H=1



Cerniera a 2 ali lunghe con tappo saldato

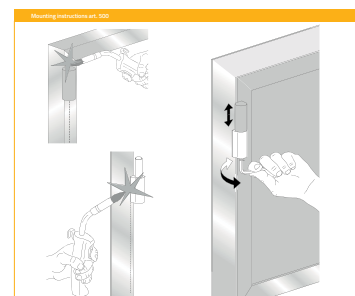
430 DX/SX

COD. PROD.	L	A	D	Weight	Capacity	Lead	
11607014	430DX-140	156	67	Ø11,8	250 Kg*	10	4,0
11607114	430SX-140	156	67	Ø11,8	250 Kg*	10	4,0



500

Cerniera a goccia tornita perno acciaio regolabile 7 mm



COD. PROD.	R	Weight	Capacity	Lead	
11618515	500-150	146-153	300 Kg*	10	3,8

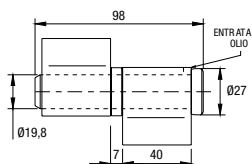
* valore portata a coppia L/H=1 / capacity of couple hinges L/H=1



Perno Zincato

440

Cerniera a 2 ali aperte perno sfilabile con rondella



COD. PROD.	Weight	Capacity	Lead	
11607509	440-90	800 Kg*	10	5,4

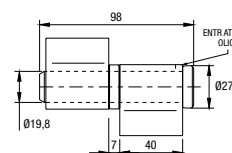
* valore portata a coppia L/H=1 / capacity of couple hinges L/H=1



Perno Zincato

445

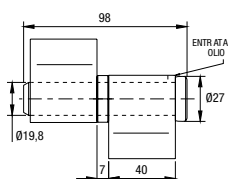
Cerniera a 2 ali aperte perno sfilabile con cuscinetto



COD. PROD.	Weight	Capacity	Lead	
11608009	445-90	800 Kg*	10	5,4

* valore portata a coppia L/H=1 / capacity of couple hinges L/H=1

CERNIERE

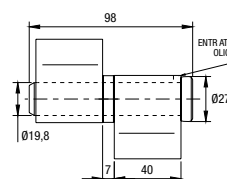


Cernierona a 2 ali chiuse perno sfilabile con rondella e cuscinetto

Perno Zincato
450

COD. PROD.				
11608509	450-90	400 Kg*	10	5,8

* valore portata a coppia L/H=1 / capacity of couple hinges L/H=1

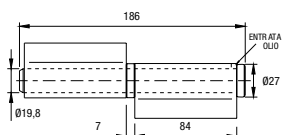


Cernierona a 2 ali chiuse perno sfilabile con cuscinetto

Perno Zincato
455

COD. PROD.				
11609009	455-90	400 Kg*	10	5,4

* valore portata a coppia L/H=1 / capacity of couple hinges L/H=1

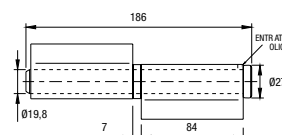


Cernierona a 2 ali lunghe aperte perno sfilabile con rondella

456

COD. PROD.				
11609518	456-180	800 Kg*	4	4,2

* valore portata a coppia L/H=1 / capacity of couple hinges L/H=1

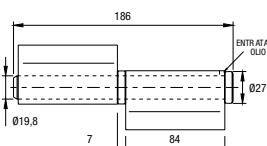


Cernierona a 2 ali aperte perno sfilabile con cuscinetto

Perno Zincato
457

COD. PROD.				
11610018	457-180	800 Kg*	4	4,2

* valore portata a coppia L/H=1 / capacity of couple hinges L/H=1

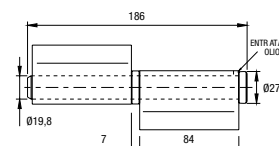
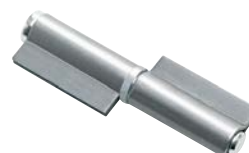


Cernierona a 2 ali lunghe chiuse perno sfilabile con rondella

458

COD. PROD.				
11610518	458-180	800 Kg*	4	4,2

* valore portata a coppia L/H=1 / capacity of couple hinges L/H=1



Cernierona a 2 ali lunghe chiuse perno sfilabile con cuscinetto

Perno Zincato
459

COD. PROD.				
11611018	459-180	800 Kg*	4	4,3

* valore portata a coppia L/H=1 / capacity of couple hinges L/H=1



Cernierona a 3 ali chiuse perno sfilabile con cuscinetto

475

COD. PROD.				
475-180	475-180	800 Kg*	4	4,2

* valore portata a coppia L/H=1 / capacity of couple hinges L/H=1



Cerniera a goccia perno ottone con cuscinetto

497

COD. PROD.			
11648015	497-150	180 Kg*	16

CATENACCI



Chiavistello Zincato

620

COD. PROD.					
11700505 001	620	zinc	50	2,1	



Zama Zincata

Chiavetta in zama

625

COD. PROD.						
11701005 001	625	Quadrata	zinc	50	1,1	



Cricchetto per vasistas

630

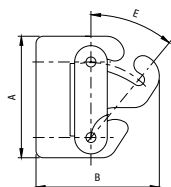
COD. PROD.					
11701505 001	630	Piccola	zinc	50	3,5



Ferroglia per art.
630 - 635 - 640

650

COD. PROD.				
11703505	650	200	6,2	



600

Cerniera per vasistas

COD. PROD.		A	B	E			
11623505	600-65	67	68	40°	40	4,1	1,576
11623510	600-85	90	92	48°	20	3,1	2,060



Maniglia a blocco

660DX

COD. PROD.				
10904005 001	660DX	zinc	20	3,0



Maniglia a blocco

660SX

COD. PROD.				
10904010 001	660SX	zinc	20	3,0

CATENACCI



Catenaccio ad incasso doppia mandata leva ottone

700Z

COD. PROD.				
11901005 001	700Z	zinc	10	3,2



Catenaccio ad incasso una mandata leva zincata

704

COD. PROD.				
11901216 001	704-24	zinc	20	2,2



Catenaccio punta quadrata
Ø 10

710

COD. PROD.				
11902005 001	710-130	zinc	10	2,0
11902010 001	710-300	zinc	10	3,9
11902015 001	710-500	zinc	10	6,0



Catenaccio punta quadrata
Ø 14

714

COD. PROD.				
11903005 001	714-330	zinc	5	3,7
11903010 001	714-660	zinc	5	6,5



Catenaccio medio

735

COD. PROD.				
11905015 001	735-250	zinc	10	3,2
11905020 001	735-300	zinc	10	3,9
11905025 001	735-400	zinc	10	5,1



Catenaccio leggero
Ø 14mm

740

COD. PROD.				
11905505 001	740-150	zinc	10	1,8
11905510 001	740-200	zinc	10	2,2
11905515 001	740-250	zinc	10	2,9
11905520 001	740-300	zinc	10	3,4
11905525 001	740-400	zinc	10	4,4
11905530 001	740-500	zinc	10	5,4
11905535 001	740-600	zinc	10	6,6
11905540 001	740-800	zinc	10	8,5



Catenaccio pesante
Ø 13mm

745

COD. PROD.				
11906005 001	745-200	zinc	6	3,5
11906010 001	745-250	zinc	6	4,5
11906015 001	745-300	zinc	6	5,3
11906020 001	745-400	zinc	6	6,8
11906025 001	745-500	zinc	6	8,3
11906030 001	745-600	zinc	6	10,2
11906035 001	745-800	zinc	6	13,3



Catenaccio porta lucchetto
medio Ø 16mm

750

COD. PROD.				
11906505 001	750-150	zinc	10	2,7
11906510 001	750-200	zinc	10	3,4

CATENACCI



Catenaccio ad avvitare
Ø 18mm

800

COD. PROD.			
11908015 001	800-300	zinc	10
11908030 001	800-600	zinc	10



Catenaccio autobloccante da avvitare
punta tonda Ø12 Corsa 30mm

730i

COD. PROD.			
11912001	730i	inox	4

COPRIPILASTRI



165 Copri pilastro quadrato grezzo

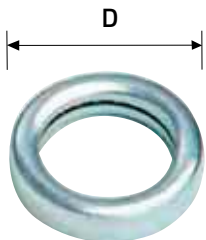
COD. PROD.		A	
12100505	165-30	30	50
12100525	165-80	80	50
12100530	165-100	100	50
12100535	165-120	120	50
12100540	165-150	150	25
12100550	165-200	200	20



165Z Copri pilastro quadrato zincato

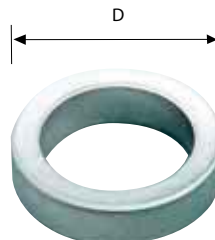
COD. PROD.		A		COD. PROD.		A	
12100510 001	165Z-40	40	50	12100535 001	165Z-120	120	25
12100515 001	165Z-50	50	50	12100540 001	165Z-150	150	25
12100520 001	165Z-60	60	50	12100550 001	165Z-200	200	20
12100525 001	165Z-80	80	50				
12100530 001	165Z-100	100	50				

RONDELLE E CUSCINETTI



400 Cuscinetto a sfere assiale
tornito e cementato

COD. PROD.		F	
12400505 001	400-11	Ø11	100
12400510 001	400-12	Ø12	100
12400515 001	400-14	Ø14	100



401Z Rondella in acciaio Zincato

COD. PROD.		F	
15400514 001	401Z-14	Ø14	200