

FINE CORSA



Arresto di fine corsa ammortizzato con base a fissare

202F-A

COD. PROD.	📄	📏	🔧	📦	🔒
10704201 001	202F-A	H=106	zinc	4	5,6



Arresto di fine corsa regolabile a fissare per cancelli ad anta

202F-B

COD. PROD.	📄	📏	🔧	📦	🔒
10704301 001	202F-B	H=130	zinc	4	6,4

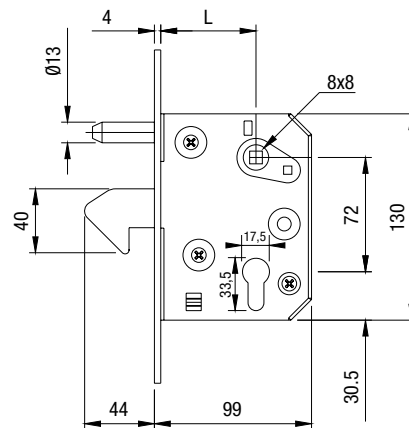
SERRATURE



Serratura a gancio con cilindro

215

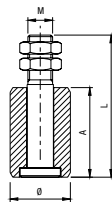
COD. PROD.	📄	L	🔧	📦	🔒
11200501 001	215-50	50	zinc	5	6,2
11200505 001	215-60	60	zinc	5	6,2



OLIVE



Oliva in nylon

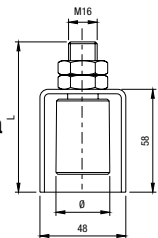


230

COD. PROD.	📄	📏	🔧	M	📦	🔒
11301010 001	230-30	Ø30	zinc	M16	20	3,7
11301015 001	230-40	Ø39	zinc	M16	20	5,2



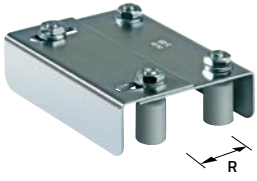
Oliva in nylon con protezione antinfortunistica



232

COD. PROD.	📄	📏	🔧	📦	🔒
11302210 001	232-30	Ø30	zinc	20	4,2
11302215 001	232-40	Ø39	zinc	20	5,7

PIASTRE



Piastra guida cancello a doppia regolazione

255

COD. PROD.	📄	📏	🔧	R	📦	📊
11306005 001	255-220	Ø30	zinc	35-62	10	22,7
11306010 001	255-350	Ø40	zinc	62-85	5	27,9



Maxi rullo in nylon a fissare

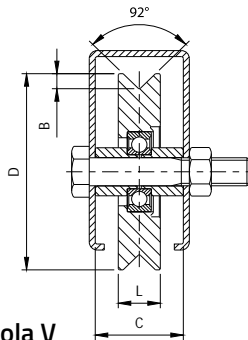
253

COD. PROD.	📄	📏	🔧	📦	📊
11305701 001	253-40	236	zinc	3	3,0

RUOTE



Ruota gola V



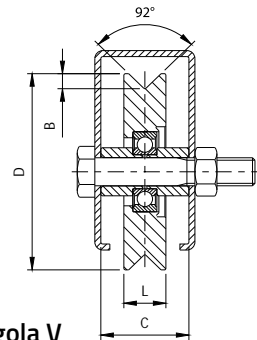
300

1 CUSCINETTO

COD. PROD.	📄	D	C	🔧	📦	📊
11501020 002	300V-80	Ø 78	34	zinc	200 Kg	10



Ruota gola V



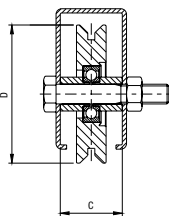
305

2 CUSCINETTI
2 BEARINGS

COD. PROD.	📄	D	C	🔧	📦	📊
11502040 002	305V-100	Ø 98	34	zinc	425 Kg	8
11502050 001	305V-120	Ø 117	34	zinc	450 Kg	6
11502080 001	305V-200	Ø 197	44	zinc	625 Kg	2



Ruota gola Y con scarico



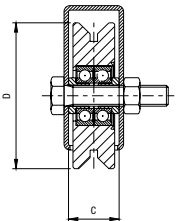
306

1 CUSCINETTO
1 BEARING

COD. PROD.	📄	D	C	🔧	📦	📊
11502510 001	306Y-60	Ø 60	24	zinc	100 Kg	12 3,5
11502520 001	306Y-80	Ø 78	34	zinc	200 Kg	10 6,9
11502530 001	306Y-90	Ø 88	34	zinc	210 Kg	8 7,1
11502540 001	306Y-100	Ø 98	34	zinc	220 Kg	8 8,9
11502550 001	306Y-120	Ø 117	34	zinc	240 Kg	6 10,0
11502560 001	306Y-140	Ø 137	44	zinc	270 Kg	2 5,2



Ruota gola Y con scarico



307

2 CUSCINETTI
2 BEARINGS

COD. PROD.	📄	D	C	🔧	📦	📊
11503040 001	307Y-100	Ø 98	34	zinc	400 Kg	8 11,4
11503050 001	307Y-120	Ø 117	34	zinc	420 Kg	6 12,5
11503060 001	307Y-140	Ø 137	44	zinc	540 Kg	2 6,6